

Newsletter

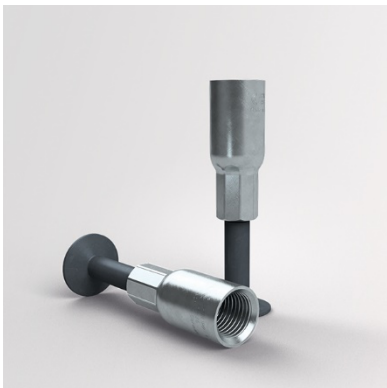
Simply Precast

November 2021
Page 1

INSIDE THIS ISSUE

1. The new, short compact anchor
2. Nailing plate for diagonal tension
3. The new PB anchor

“Until now, there was no optimal solution for massive slab-like elements that could convince with this simplicity.”



The New, short compact anchor

Lifting anchors with a distinctive footer area are universally applicable and therefore very popular in the precast industry. The installation is simple, and the reinforcement requirements are the lowest compared to other lifting anchors with the same application.

Short anchor, minimal requirements

Until now, there was no optimal solution for massive slab-like elements that could convince with this simplicity. With the new, short Compact anchor in sizes RD36, 42 and 52 a “strong” solution is now available on the one hand. On the other hand, significantly smaller edge and centre distances create a flexibility in the planning of lifting anchors that is unique in the sector. This unprecedented freedom for lifting anchors as well as the noticeable saving of material resources and costs due to lower component thicknesses are unbeatable arguments for the new all-rounder.

Of course, the short Compact anchor fits seamlessly into the tried and tested PHILIPP Threaded transport anchor system with all combination options for lifting devices and accessories.

Compact anchor in short version at a glance:

- Threaded transport anchor type RD36, 42 and 52
- Application in slab-like precast concrete elements of all kinds
- Lowest requirements for edge and centre distances
- Significantly more flexibility in the planning of lifting anchors
- Thinner elements possible, thus considerable savings potential is available
- Equivalent supplement to the PHILIPP Screw anchor (RD12-RD30)

Nailing Plate for diagonal tension

With a targeted inclination of 15° for Threaded transport anchors - straight tail, both the mandatory additional reinforcement for diagonal tension does not apply and related application errors can be avoided.

The new system consisting of a new nailing plate and proven standard elements (transport anchor RD16-52, lifting device Lifty and Lifting loop with threaded end) not only increases safety but also saves time and money.

Simple installation and material savings are convincing arguments for the use of the new nailing plate.

The previously available steel version is now completed by a version made of plastic.



“The new system not only increases safety but also saves time and money.”



Philipp PB Anchor

While many things around us tend to become short-lived we are looking to a future that will last for generations to come. Therefore, we are pleased to introduce you our durable fixations for precast concrete constructions, achieved with simple but high-quality components now - with the new PHILIPP PB anchor.

The intensive development work has paid off in every respect resulting in a system that creates confidence with its long-lasting design - entirely in the spirit of an excellent technical and even sustainable solution.

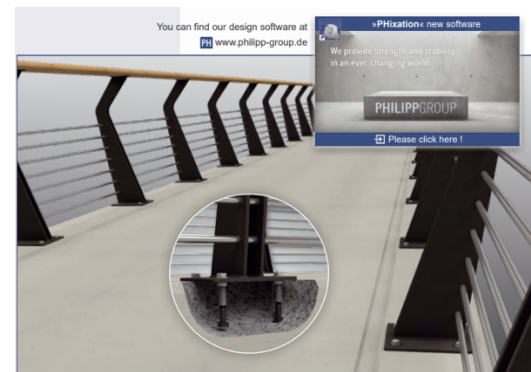
Features and benefits compact

- Certified system (ETA approval)
- Multi-purpose, permanent fixing of all types of constructions
- Flexible formwork installation - recessed or surface-flush
- High load-bearing capacities
- Releasable connection at any time
- Easy, software-based design acc. to EN 1992-4:2018

“While many things around us tend to become short lived, we are looking for a future that will last for generations to come.”



Philipp PB Anchor.



Installation example of the PB Anchor.

